



**Insulated
Structures**

(1989)(Pty)Ltd.
Reg. Number 1971/05601/07

Panel Specifications

Panel Specifications

- Standard Panels: Outer Skin of brilliant white Chromodeck, available in black.
- Superior Polyurethane insulation injected for superior insulation and adhesion
- High-impact PVC interlock profiles on all edges provides totally sealed insulation and a perfect vapour barrier
- Easily Erected and dismantled
- Optional skin finish in Stainless Steel – Grades AISI 304 AIS 403

Floors – Fabricated and Concrete:

Fabricated Floors:

- The inside floor finish is 2mm Aluminium Treat Plate or 0.8mm Galvanised plate glued to a Marine Ply base

Concrete Floor:

- Concrete Floors are used for flush entry – no step up, and in permanent structures. Usually a recess of 150-170mm is used to accommodate the foam slab insulation and the concrete screed



**Insulated
Structures**

(1989)(Pty)Ltd.

Reg. Number 1971/05601/07

Auto Glass Doors



Auto Doors

Auto Glass Sliding Doors – Customer display areas

High Speed Roll-Up Doors for warehousing areas



**Insulated
Structures**

(1989) Pty Ltd.
Reg. Number 1971/05601/07

Meat Rails



Meat Rails

Hot Dipped or Electro Plated Galvanised system

Support structure integrated into insulated panels

Optional free standing continuous galvanised system with switch gear

Optional imported continuous aluminium system

Bumper Rails



Bumper Rails

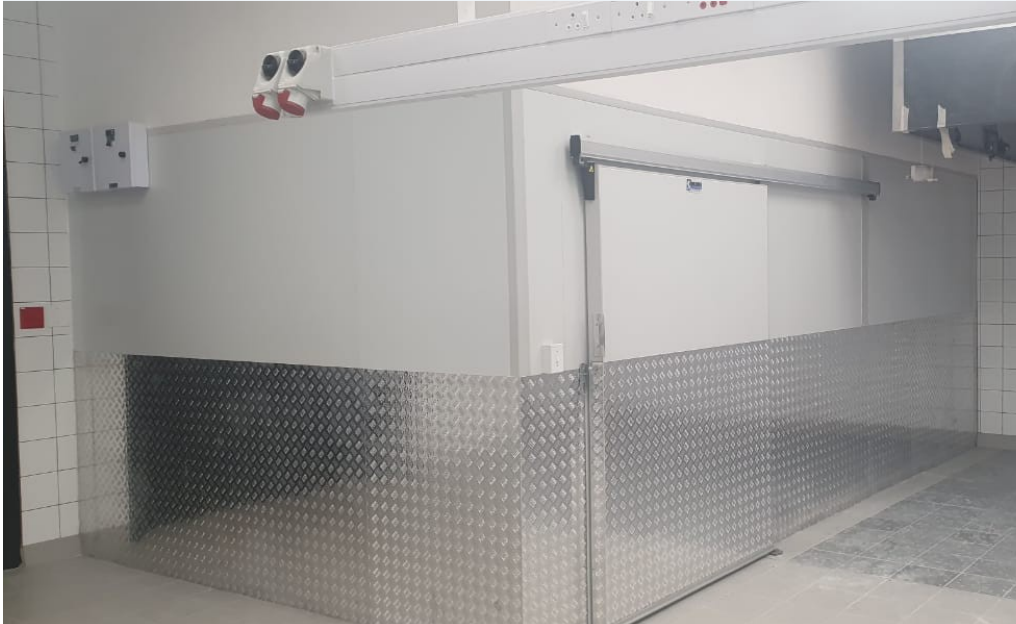
Galvanised or Stainless Steel pipe bumpers to protect cases, panels and glass doors

Heavy Duty galvanised steel angles for back of house areas

Custom made Goal Posts to protect loading door frames



Aluminium Chequer Plate



Aluminium Chequer Plate

Installed as an option to protect panels from scratches and light impact damage

1.6mm Thick

Standard height – 1250mm AFFL



**Insulated
Structures**

(1989)(Pty)Ltd.
Reg. Number 1971/05601/07

Plastic Strip Curtain



Plastic Strip Curtain

Ball Edged to reduce tearing

Available in clear or translucent colours: Red, black, blue)

Sizes – 200mm wide strips for light duty - pedestrian

300mm wide strips for medium duty – pallet jacks

400mm wide strips for heavy duty – fork lifts